

# Miracle

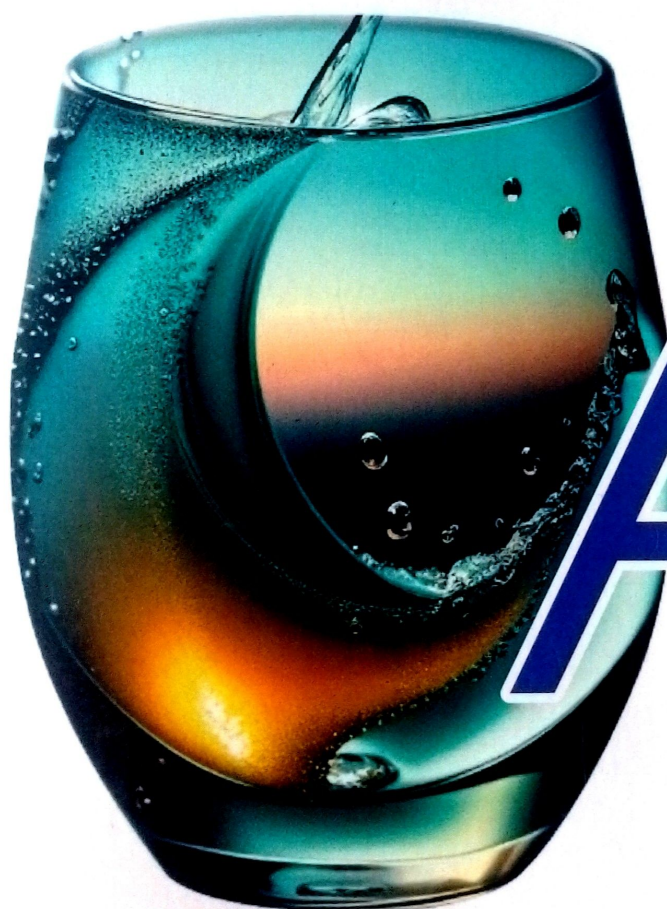
# Water

to Energize Life

Cleansui

Next  
Generation  
High  
Grade

Alkaline  
ionized  
Water Purifier



MADE IN JAPAN

 MITSUBISHI CHEMICAL CLEANSUI

三菱化学可菱水

Living with safe,  
reliable and tasty water.

Water is necessary for the human body to live.  
The water at hand might be clear, but we can't  
see the actual water quality

Cleansui cleans the water with high performance  
water filter technology.

The quality of the water is a decisive element of  
not only drinking but for making dishes which is  
a basis of living.

Cleansui contributes to people's well-being by  
improving their drinking and eating habits.

與安全、安心、  
好喝的水相伴生活。

水是維持生命必不可少的元素。

雖然水看起來無色透明，

但僅通過肉眼觀察，

無法判斷其真正的水質。

可菱水通過優異的淨水性能，

淨化您身邊的水。

優質的水不僅適合飲用，

還能讓每日生活中最基本的料理變得更加美味。

可菱水願為改善每個人的飲食生活貢獻力量。



# Mitsubishi Chemical Cleansui Corporation

## From Japan to India

Mitsubishi Chemical Cleansui, established in 1983, is a member of Mitsubishi Chemical Holdings Group, one of the largest chemical industrial group in the world.

We research and develop technology in many fields

- Water treatment.
- Residential and commercial water purifier.
- Healthcare and medical.
- Chemistry, plastics, synthetic fibers, carbon fibers, mixed materials.

Water is one of the most highly valued natural resources on our planet. It is necessary for the human body to survive. Studies show that less than 1% of the water supply on Earth can be used as drinking water. Mitsubishi Chemical Cleansui Corporation in Japan has come up with a solution to provide a more advanced level of water filtering that is now available to the human race.

## Mitsubishi Cleansui

### Water - Filtration & Alkaline Ionized Water Purification System

#### Made In Japan for India

In Japan, Mitsubishi Cleansui is proud to be the No. 1 brand, accounting for 80% of water filtration market share under sinks and 28% of the total market share of water filtration products. Worldwide, Mitsubishi Chemical Cleansui products are available in more than 30 countries

**Mitsubishi Cleansui** – Water Filtration & Alkaline Ionization Water Purifier, purifies ordinary tap water into clean natural mineral rich, alkaline, antioxidant & micro clustered – tasty drinking water. It's generated through patented Hollow Fiber Membrane & state of the art Electrolysis process using 9 Platinum coated 99.97% Titanium Electrode Plates

**Mitsubishi Cleansui** unique patented 4 stage filtration levels with hollow- fiber membrane technology removes tap water contamination including bacteria toxic impurities, allowing natural beneficial minerals to remain in the water to give you with clean & tasty miracle water.

**Mitsubishi Cleansui** unique and advanced filtration system uses a combination of ceramics, activated carbon and hollow fiber membrane filters to removes unwanted Impurities larger than 0.1 micron such as algae, microorganisms, bacteria, rust, mold, and heavy metals in the water, generating clean and great tasting water every time.

**Mitsubishi Cleansui** Alkaline Ionization technology is equipped with 5 Platinum coated 99.97% Titanium Electrode Plates in the electrolysis tank for molecular separation and restructuring generating 5 different Alkaline ionized water at the cathode, with appropriate alkalinity and retaining health-beneficial minerals. Meanwhile, acid water is generated at the anode. The smart controlled integrated stylish Faucet generates 6 different types of water with flexible pH levels.



# List of Substances Removed 去除的物質

	Substances	Description / Potential Health Effects	
1	<b>Free residual chlorine</b> 游離殘留氯氣	Chlorine is the most commonly used disinfectant. Affects the taste of water. 氯氣是最常用的消毒劑，會影響水的味道。	 
2	<b>Turbidity</b> 污濁	The cloudiness of water; and indication of water quality and filtration effectiveness. 衡量水的污濁程度，可以將水中的鐵鏽等微小顆粒除去。	 
3	<b>Chloroform</b> 三氯甲烷	One of trihalomethanes, Suspected of being carcinogenic. 總三鹵甲烷的構成物質。有可能引發癌症。	
4	<b>Bromodichloromethane</b> 二氯溴甲烷	One of trihalomethanes. 總三鹵甲烷的構成物質。	
5	<b>Dibromochloromethane</b> 二溴氯甲烷	One of trihalomethanes. 總三鹵甲烷的構成物質。	
6	<b>Bromoform</b> 三溴甲烷	One of trihalomethanes. 總三鹵甲烷的構成物質。	
7	<b>Tetrachloroethylene</b> 四氯乙烷	Widely used as in dry cleaning and as solvent for degreasing metals in automotive, metal, light industries. It is suspected to be a carcinogen, affecting the liver and kidneys. 廣泛應用於乾洗，工業用脫脂溶劑。對肝臟和腎臟有害，有可能引發癌症。	
8	<b>Trichloroethylene</b> 三氯乙烷	A chemical compound used as an industrial solvent for degreasing metals. It is suspected to be a carcinogen, affecting the liver and kidneys. 應用於工業用脫脂溶劑，對肝臟和腎臟有害，有可能引發癌症。	
9	<b>Trihalomethanes</b> 總三鹵甲烷	Disinfectant by-products (DBP). General terms for four chemical compounds (chloroform, bromodichloromethane, dibromochloromethane, bromoform). 主要的構成物質是三氯甲烷、二氯溴甲烷、二溴氯甲烷、三溴甲烷。這些有機化合物會和自來水中的氯發生反應，生成有可能引發癌症的物質。	 
10	<b>CAT (Agricultural chemicals)</b> CAT (農藥)	Widely used for herbicides. 有機化學除草劑。有可能攪亂內分泌系統。	
11	<b>2-MIB (Musty smell)</b> 2-MIB (黴臭味)	Musty smell affects the taste of water. 黴菌會影響自來水的味道。	 
12	<b>Soluble Lead</b> 溶解性鉛	Perceived as a problem because there is a possibility of causing intellectual damage to infants and babies if it is accumulated in their mothers. 蓄積於體內時，有可能引起嬰幼兒知能發育障礙，老年癡呆等疾病。	
13	<b>1,2-DCE (※)</b> 1,2-DCE (※)	Used in solvents, dye extraction, fragrances, lacquers, etc.; the unpleasant odor is said to spoil the taste of the water. 用於溶劑、染料取、料、漆等，據噁心的味會破壞水的味。	
14	<b>Benzene</b> 苯	Used in synthetic materials such as dyes, synthetic rubber, synthetic detergents, and organic pigments; said to be possibly carcinogenic and harmful. 用於染料、合成橡、合成清潔劑、有機顏料等的合成原料，據可 癌或有害。	
15	<b>Anionic surfactant</b> 離子面活性劑	Said to spoil the taste of the water when the active ingredients of synthetic detergents, etc. dissolve into the water. 據合成清潔劑的有效成分等溶後，會破壞水的味。	
16	<b>Phenols</b> 酚類	Sometimes enters the water supply via wastewater from gasworks, chemical plants, etc.; reacts with chlorine, producing an unpleasant odor that is said to spoil the taste of the water. 據可燃氣工廠、化學工廠等的排水混入水中，和氯產生反應，成噁心的味，破壞水的味。	
17	<b>Geosmin</b> 土素	One of the substances that causes an unpleasant, musty odor; the earthy odor is said to spoil the taste of the water. 據是導怪味 (味) 的其中 1 項物質，會有似土味的氣味破壞水的味。	
18	<b>Iron (fine particle)</b> (微小顆粒)	Mainly from iron water pipes. May turn water brown and affect the taste. 多半來自自來水水管 (管)。它是導暗紅色鏽水等現象產生的主因，並會使水出現異味。	
19	<b>Aluminum (neutral)</b> (中性)	Used in water purification as an aluminum-based flocculant. 做為系凝劑用於淨水理。	

※1,2-DCE: cis-1,2-Dichloroethylene and trans-1,2-Dichloroethylene  
※1,2-DCE: 順-1,2-二氯乙烯和反-1,2-二氯乙烯

Cartridge Filtration Grade

 SUPER HIGH GRADE

 BASIC



## Features of Cleansui 可菱水的特點

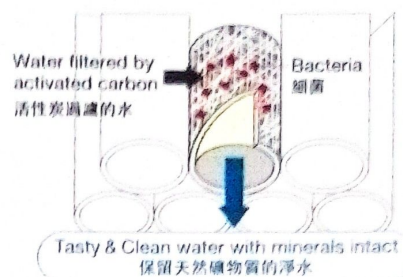
### Red rust experiment 鐵鏽過濾實驗

Without hollow fiber membrane



Cleansui

Activated carbon 活性炭  
Hollow fiber membrane filter 中空絲膜



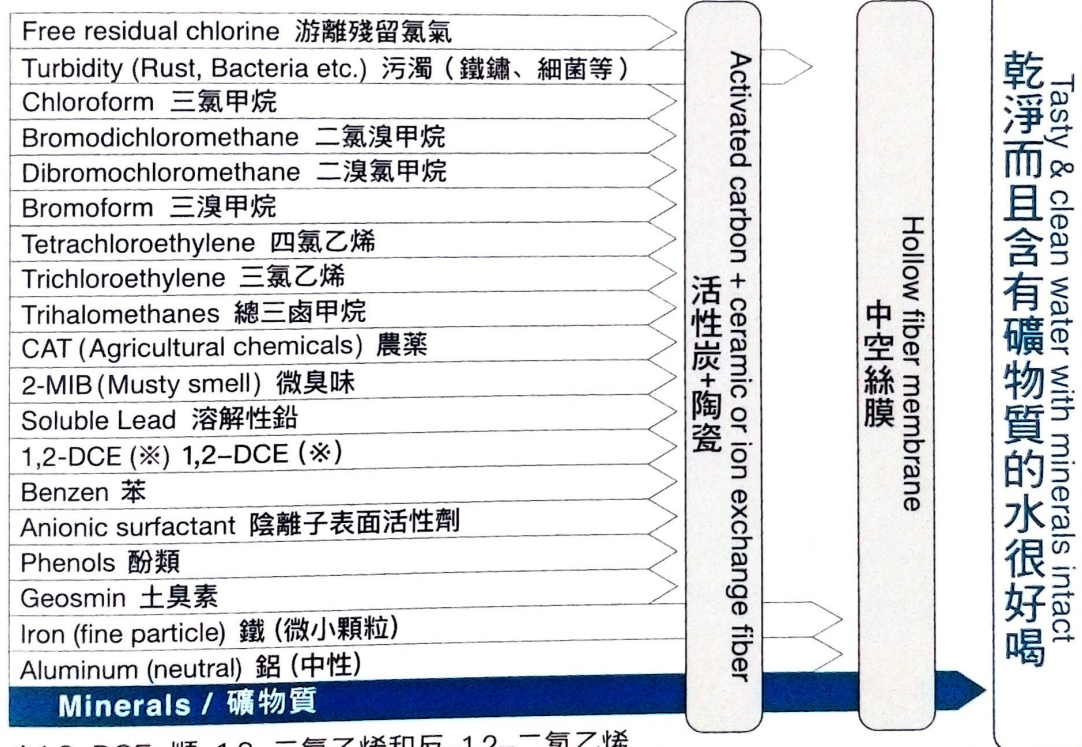
Filtration system with the hollow fiber membrane  
水通過中空絲膜的方式

Cleansui Hollow Fiber Membrane Technology removes fine particles in water such as bacteria, algae, fungi, micro-organism, cysts, cryptosporidium, and metal particle such as rust, lead and other.

可菱水中空絲膜可以除去自來水中的粒子、細菌、藻類、真菌、微生物、囊泡、隱孢子蟲、微粒子金屬(鐵鏽、鉛)等。

Cleansui's original proprietary filtration system ensures the high level of performance.  
「Cleansui 可菱水」獨特的過濾方法保證了高水準的淨水能力。

The unique and advanced filtration system uses a combination of ceramic, activated carbon with hollow fiber membrane filters.  
配合陶瓷、活性炭、中空絲膜的濾芯是很有效的過濾方法。



※ ※1,2-DCE: 順-1,2-二氯乙烯和反-1,2-二氯乙烯

Bacteria removal test results, conducted by Toho University.  
細菌除去能力表 出自：日本東邦大

Species of bacteria 菌種			E.coli 大腸桿菌	Serratia 沙雷氏菌	Salmonella typhi 沙門氏菌	Vibrio cholerae 霍亂菌	Shigella 痢疾志賀氏菌
Plate count (CFU/ml) 細菌個數 (個/ml)	Before filtering 濾過前		$5.4 \times 10^5$	$7.2 \times 10^5$	$3.5 \times 10^5$	$8.5 \times 10^5$	$6.2 \times 10^5$
	After filtering 濾過後		0	0	0	0	0

**Cleansui**

Miracle Water

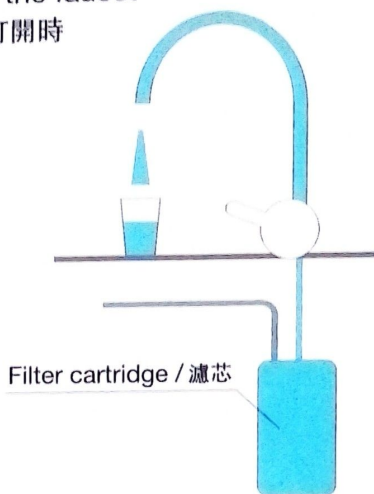
## Cleansui Built-in 可菱水台下型

Advanced source stop filtration system  
provides the low risk of leakage

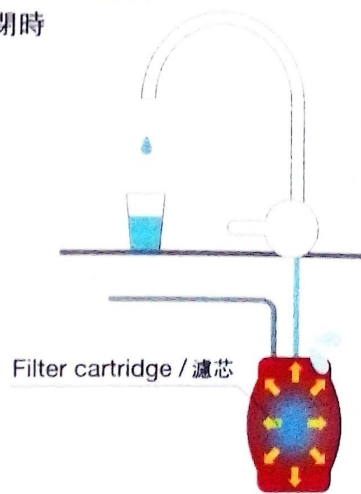
先進的三管無壓技術，  
降低漏水風險

### Typical top stop filtration system / 普通水龍頭

Turning on the faucet  
閥門打開時



After turning off the faucet  
閥門關閉時

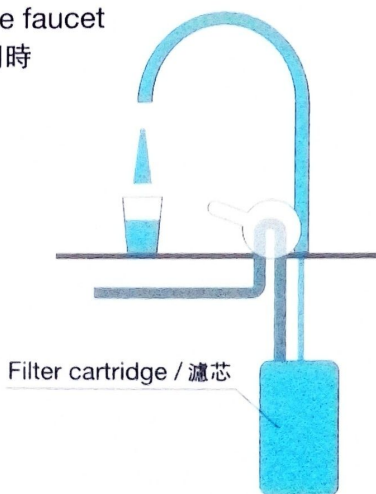


After turning off the typical top stop filtration system, it could leak. Because the filter cannot withstand a change in water pressure.

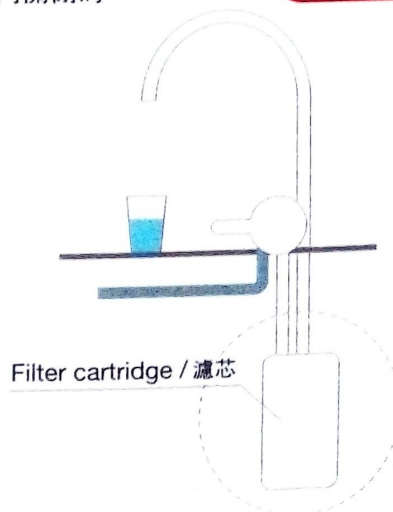
當自來水閥門關閉後，濾芯仍處於通水狀態。當遇到水壓突然增大等情況時，存在造成漏水的隱患。

### Cleansui's source stop filtration system / 可菱水的三管無壓龍頭

Turning on the faucet  
閥門打開時



After turning off the faucet  
閥門關閉時



**Cleansui**

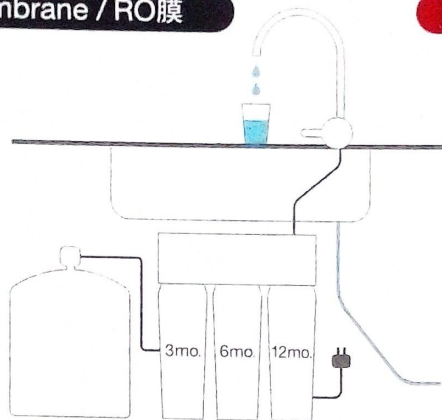
After turning off the faucet, Cleansui's source stop filtration system reduces the risk of flooding due to changes in water pressure and makes changing the filter simple and safe.

當自來水閥門關閉後，濾芯處於無壓的狀態，大大降低了濾芯漏水的風險。此外，也使得更換濾芯的過程更加快速簡便。



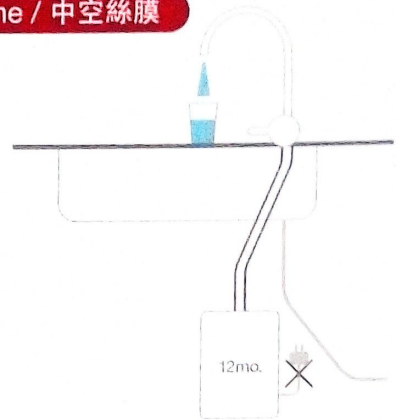
RO type under-sink / 典型的櫥下型

RO Membrane / RO膜



Cleansui

MF Membrane / 中空絲膜



3 mo. 6 mo. 12 mo.

Different timing  
更換時期不同



Big  
體積大



Necessary  
需要



ca.0.1 liters / min  
約 0.1 公升 / 分



Having waste water  
有廢水



Minerals are removed  
不保留

Replacement the filter cartridge  
濾芯更換

Cartridge size  
濾芯大小

Power supply  
動力

Water flow volume  
流量

Drain water  
廢水

Minerals  
礦物質

Only one time  
只更換一次

Compact  
體積小

Unnecessary  
不需要

3 liters / min  
3 公升 / 分

No waste water  
無廢水

Minerals remains  
保留

12 mo.

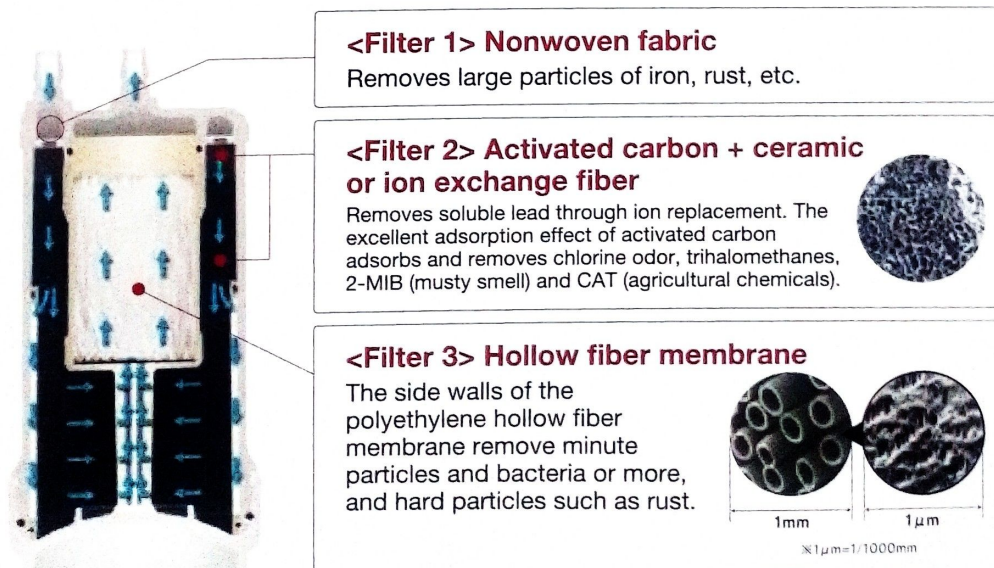


Cleansui delivers reliable safe water to you easily. 可菱水為您提供安全可靠的飲用水

Cleansui's unique triple filtration system 三层濾系統，给您全面的保

A unique triple filtration system that combines nonwoven fabric and ion exchange fibers with activated carbon and a hollow fiber membrane. The high-performance cartridge provides clean, safe water with minerals intact.

可水利用独有技术创出优越的净水性。丙烯棉、活性炭及中空纤维组成的三层滤系统，滤后保留天然矿物质，为您带来安心、自然、健康的饮用水



Cross section of EUC2000 cartridge



# Cleansui

Miracle Water

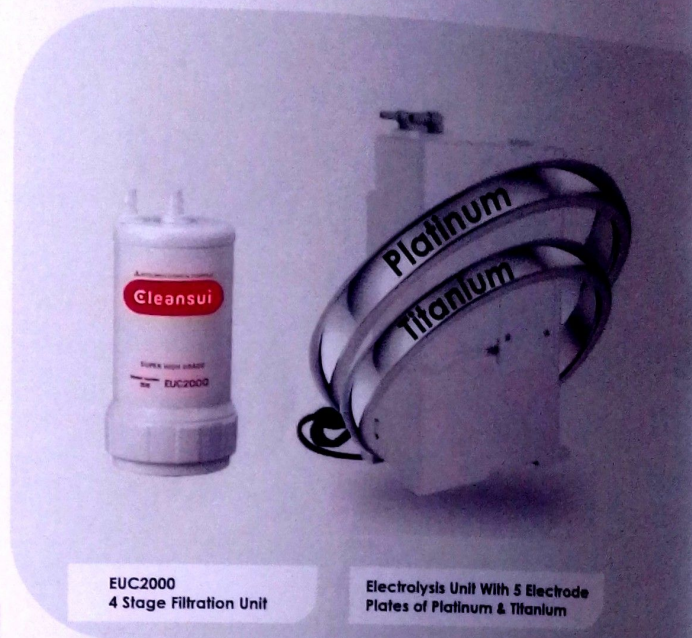
## Next Generation High Grade

### EU301



Water faucet cluster with integrated controller

# A<sup>lkaline</sup> i<sup>onized</sup> Water Purifier



EUC2000  
4 Stage Filtration Unit

Electrolysis Unit With 5 Electrode  
Plates of Platinum & Titanium

## MITSUBISHI CLEANSUI - EU301

### Components of Water Purifier

#### ① DEDICATED FAUCET

- High quality chrome plated copper material, easy to clean
- Easily select water types via one-touch electronic control panel
- The control panel is user-friendly, enhanced functions help to prevent accidental drinking of strong alkaline ionized water or acid ionized water. Safe for the elderly and children thanks to the warning sounds and red signal lights
- Ease to control water flow with lever handle
- Sophisticated and space-saving design for spacious sink and beautiful kitchen: small ionizing unit and cartridge are placed under the sink in the kitchen

#### ② HIGH-PERFORMANCE CARTRIDGE NO. EUC2000

- 4 advanced filtration layers in 1 cartridge, small and space-saving design
- Hollow fiber membrane technology helps to eliminate small-size bacteria from 0.01 - 0.1 micron
- Clean and direct-drinking water with natural minerals intact
- No electricity - Low waste water

#### ③ ACCESSORIES

- A special set of accessories is made of copper/ ABS plastic for limitation of fouling and bacteria
- Water-leakage prevention mechanism gives no pressure to the cartridge, making it easier for cartridge installation and replacement

#### ④ ADVANCE ELECTROLYSIS IONIZING UNIT

- More energy saving, up to about 250W (standby mode, about 0.5W)
- Low waste water, (wastewater/ usable water) ratio is approx. 2/8
- Continuous use of alkaline ionized water is possible within 10 minutes



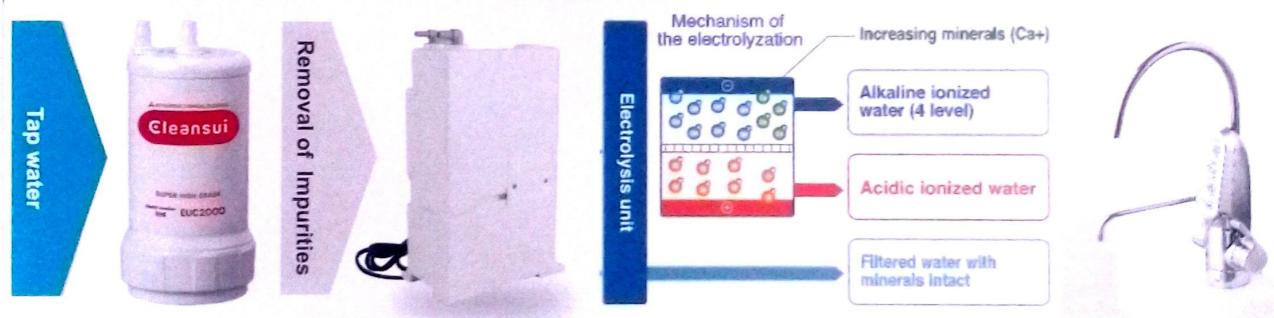




**Mitsubishi Cleansui EU301 Alkaline Ionized Water Purifier** is a famous household health care product line of Mitsubishi Chemical Corporation. The EU301 alkaline ionized water filter adopts hollow fiber membrane technology, integrating 4 advanced filtration levels in a single filter. Filter technology uses no electricity, wastes no waste water, and retains beneficial minerals in the water

**Alkaline Ionized Water** uses Next Generation Electrolysis process for Ionization of Water using 5 Electrode Plates made of Titanium & Platinum.

## Mitsubishi Cleansui Water Filtration & Alkaline Ionized Purification System



**EUC2000**  
4 Stage Filtration Unit

**Electrolysis Unit With 5 Electrode Plates of Platinum & Titanium**

**Water faucet cluster with integrated controller**

**Mitsubishi Cleansui** – Water Filtration & Alkaline Ionization Water Purifier, purifies ordinary tap water into clean natural mineral rich, alkaline, antioxidant & micro clustered – tasty drinking water. It's generated through patented Hollow Fiber Membrane & state of the art Electrolysis process using 5 Platinum coated 99.97% Titanium Electrode Plates

**Mitsubishi Cleansui** electrolysis process generates water with a special format of hydrogen called "Active Hydrogen or Molecular hydrogen or Di atomic Hydrogen( $H_2$ ). MOLECULAR HYDROGEN OR ACTIVE HYDROGEN IS "THE FUEL OF LIFE". The hydrogen in this format is very much beneficial to the human body to derive Antioxidant, Alkalizing, Anti inflammatory, Anti ageing Anti obesity, Anti cancer, best hydrating best detoxifying benefits to the body.

Mitsubishi Cleansui - Drinking Water rich in this active hydrogen is called "**Hydrogen Rich Water**". Alkaline Ionized water can fight against oxidant stress.



# Cleansui

## Miracle Water



Mitsubishi Cleansui EU301

Alkaline Ionized Water Purifier is composed of 3 main parts:

1. EUC 2000 water filter
2. Water electrolysis unit
3. Water faucet cluster with integrated control



The type of water can be chosen with simple control panel operation.

簡單的觸控面板，有6種水可供選擇

### Strong alkaline water pH9.5 -pH10.5

For soaking vegetables to remove bitterness, boiling vegetables, and cooking stewed dishes.

可以去掉澀味、焯菜、烹煮料理等

### Alkaline 3 water pH9.0 - pH10.0

For coffee, tea, soup, drinking, and more.

可以用於泡茶、煮咖啡、熬湯、飲用等

### Alkaline 2 water pH8.5-pH9.5

For rice cooking, drinking, and more.

可以用於煮飯、飲用等

### Alkaline 1 water pH8.0 - pH9.0

For starting to drink alkaline water, rice cooking, and more.

剛開始飲用鹼性離子時，從1開始

### Filtered water

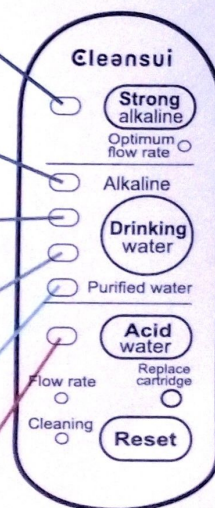
For taking medicine, making baby formula, drinking, and more.

可以用於服藥、沖泡奶粉、飲用等

### Acidic ionized water pH5.0-pH6.5

For face washing

可以用於洗臉



Hole diameter	Base diameter	Countertop thickness	Length of water outlet	Height of water outlet
安裝孔徑	底座直徑	水槽厚度	出水口長度	出水口高度
φ36-40mm	φ50mm	4-30mm	143.5mm	210mm

For Drinking



# Mitsubishi Cleansui Water Filtration

## NEXT GENERATION WATER FILTERING TECHNOLOGY

### HOLLOW FIBER MEMBRANE TECHNOLOGY

#### 4-in-1 built-in filter

The EU301 alkaline ionized water filter adopts hollow fiber membrane technology, integrating 4 advanced filtration levels in a single filter. Filter technology uses no electricity, wastes no waste water, and retains beneficial minerals in the water.

EUC2000 filter compact size, integrated 4 levels of continuous filtration, powerful filtering capabilities.

##### 1. Nonwoven mesh layer

Filter coarse, remove the dirt and impurities in the water.

##### 2. Ion exchange fiber layer

Eliminate dissolved lead mixed with water

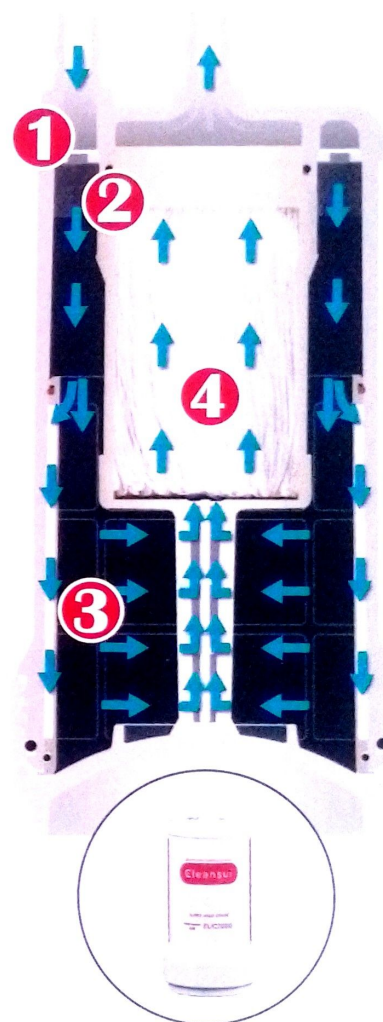
##### 3. Activated carbon layer

Removes toxic impurities, plant drugs, deodorizing mold, chlorinating in water and some other impurities such as Bromoform / Trihalomethanes / Chlorine / Chloroform 1,1,1 / Trichlorethylene / Bromodichloromethane ...

##### 4. Hollow-fiber filter layer

Water is absorbed from the outside of the tube wall of the hollow fibers including millions of filter holes with the size of 0.01 – 0.1 micron from the inside. Impurities larger than 0.1  $\mu\text{m}$  such as algae, microorganisms, bacteria, rust, mold, and heavy metals in the water will be filtered out, leaving only clean water and beneficial minerals.

EUC2000 FILTER



Mitsubishi Chemical Cleansui Corporation was the first corporation in the world to develop hollow fiber filter membrane technology made from ultra-fine polyethylene. Drinking, super clean water after being filtered. The hollow fiber filter has very small perforated tubes, and water must flow through the tube wall through millions of tiny holes with sizes ranging from only 0.01 - 0.1 micrometers.

**Mitsubishi Cleansui** unique patented 4 stage filtration levels with hollow- fiber membrane technology removes tap water contamination including bacteria toxic impurities, allowing natural beneficial minerals to remain in the water to give you with clean & tasty miracle water.

**Mitsubishi Cleansui** unique and advanced Filtration system uses a combination of ceramics, activated carbon and Hollow Fiber Membrane Filter to removes unwanted Impurities larger than 0.1 micron such as algae, microorganisms, bacteria, rust, mold, and heavy metals in the water, generating clean and great tasting water every time.



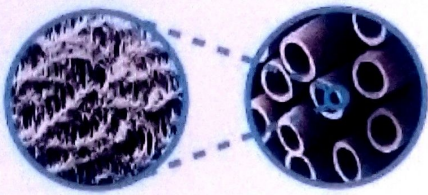
# Cleansui

Miracle Water

## Mitsubishi Cleansui Hollow Fiber Membrane NEXT GENERATION WATER FILTERING TECHNOLOGY

### POWERFUL FILTERING CAPACITY

The wall layer of the hollow fiber filter membrane can immediately remove incoming small crystal 0.01 micrometer from water.



Enlarge

### EUC2000 FILTER



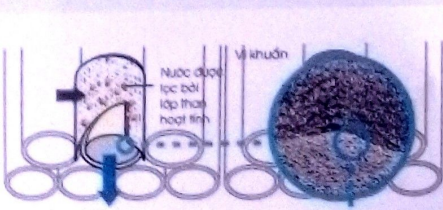
### REMOVE PARASITES CRYPTOSPORIDIUM INTESTINAL TRACT

Size is about 4-5 microns.  
This is an invasive microbial disease enter the body through the digestive tract, causes fever and acute diarrhea. Chlorine disinfection at the factory. Water cannot eliminate these bacteria. REMOVES RED RUST



### NET STRUCTURE

The water mechanism will pass through the filter fibers. Miscellaneous The substance is filtered inside into these fibers.

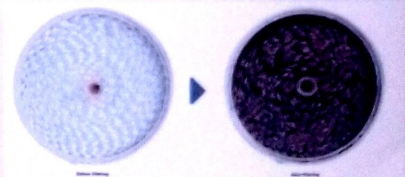


Polyethylene Screening

### DIFFERENCE WHEN THERE IS STRUCTURE HOLLOW FIBER FILTER

Before  
Use

After  
use



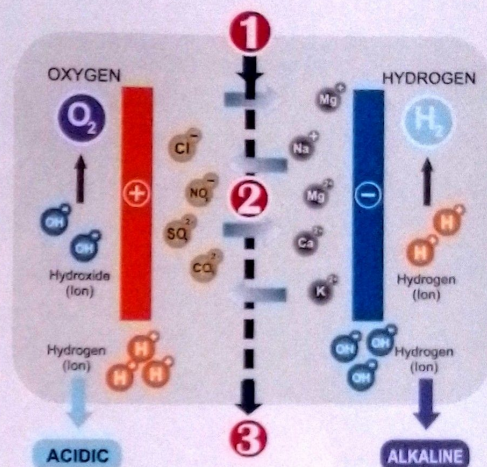
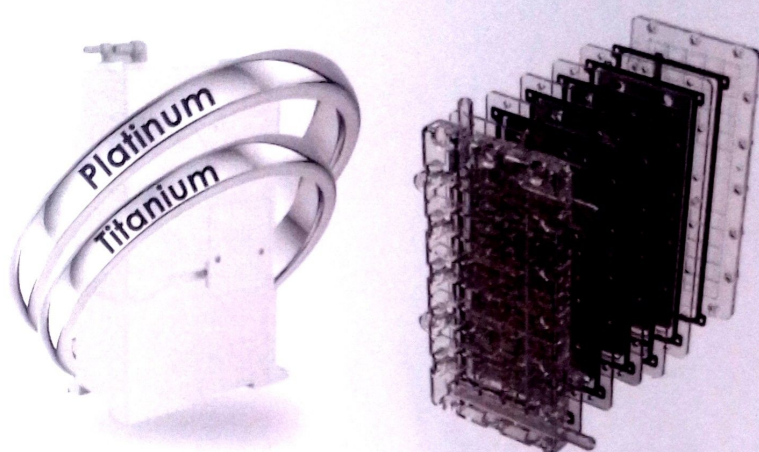
Before filtering After filtering

Bacteria and other micro- particles cannot pass through the filter membrane micro-structure, So, they will be retained on the outside surface of the filter membrane



# Mitsubishi Cleansui

## Alkaline Ion Electrolysis Technology



1. Filtered water from the EUC2000 filter is sent to the Alkaline Ion Electrolysis Tank.
2. **Alkaline Ion Electrolysis Tank** having 5 Electrode Plates of Platinum & Titanium will activate the **Molecular separation and restructuring**. Alkaline ionized water will be created at the cathode, with appropriate alkalinity and retaining health-beneficial minerals. Meanwhile, acid water is generated at the anode.
3. Alkaline ionized water or acidic ionized water is given at the faucet according to the control panel on the device

5 Platinum (Titanium) Plates  
Powerful Electrolysis using  
Multi- function electrolytic cell  
Platinum Coated Titanium Electrode Plates  
wide adjustable range of pH levels  
( from 3.0 to 11.0)

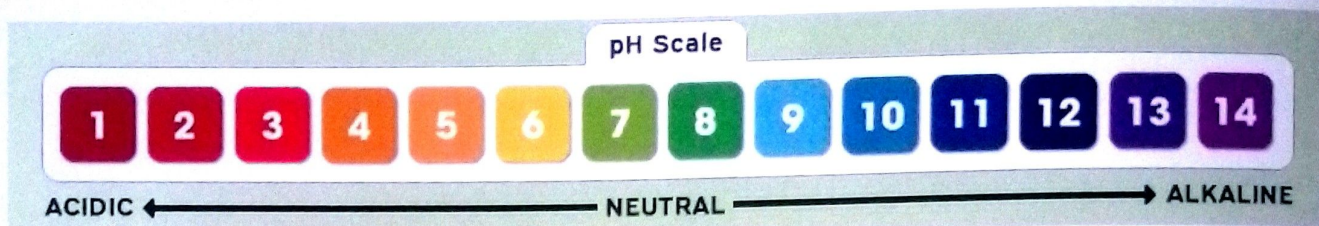
**Mitsubishi Cleansui** Alkaline Ionization technology is equipped with 5 Platinum coated 99.97% Titanium Electrode Plates in the electrolysis tank for molecular separation and restructuring generating 5 different Alkaline ionized water at the cathode, with appropriate alkalinity and retaining health-beneficial minerals. Meanwhile, acid water is generated at the anode. The smart controlled integrated stylish Faucet generates 6 different type of water with flexible pH levels.

**Mitsubishi Cleansui** electrolysis process generates water with a special format of hydrogen called "Active Hydrogen or Molecular hydrogen or Di atomic Hydrogen(H<sub>2</sub>)". MOLECULAR HYDROGEN OR ACTIVE HYDROGEN IS "THE FUEL OF LIFE". The hydrogen in this format is very much beneficial to the human body to derive Antioxidant, Alkalizing, Anti inflammatory, Anti ageing Anti obesity, Anti cancer, best hydrating best detoxifying benefits to the body.

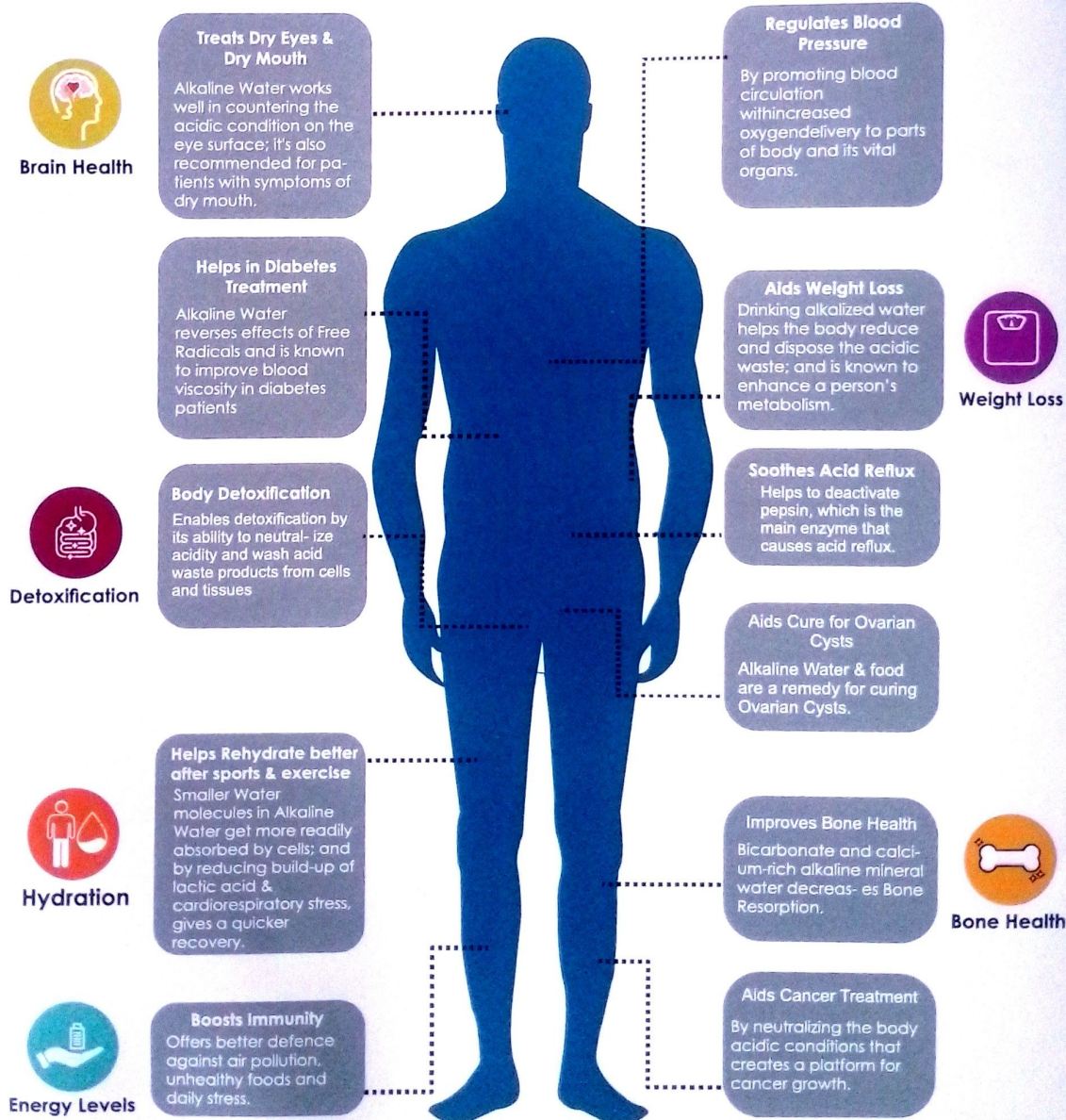


### THE HEALTH BENEFITS OF ALKALINE WATER TO THE HUMAN BODY

Alkaline Water is water with a higher pH (around 8 or 9) than normal drinking water. The pH level is a number that measures how acidic or alkaline a substance is on a scale of 0 to 14. Due to this Alkaline Water can neutralize the acid in your body and provide many health benefits.



### BENEFITS TO THE HUMAN BODY





# Mitsubishi Cleansui

## Water Filtration & Alkaline Ionized Purification System

Health benefits of drinking **Mitsubishi Cleansui Purified** – Mineral Rich Alkaline Ionized Miracle water

### ALKENIZES, ENERGIZES, HYDRATES, ANTIOXIDIZES AND DETOXIFIES HELPFUL IN TREATMENT OF

ECZEMA	HIGH BLOOD PRESSURE	OBSESITY	UREA STONES
ALLERGIES	HIGH CHOLESTEROL	MIGRAINE	COLON CLEANSING
DIABETES	CONSTIPATION	GASTRITIS	BODY ODOUR
GOUT & ARTHRITIS	CHRONIC DIARRHOEA	TUMOR/ CANCER	DEHYDRATION
OSTEOPOROSIS*	CHRONIC FATIGUE	TOXIN NEUTRALIZATION	COMMON COLDS

Mitsubishi Cleansui Alkaline Ionized water is used for drinking and cooking. It also provides users with several important health benefits:

<b>ALKALIZING</b>	restores pH balance by reducing acidity levels in the body
<b>ANTIOXIDANT</b>	helps to neutralize free radicals that can cause cellular and DNA damage
<b>SUPER HYDRATING</b>	smaller water cluster size allows water to penetrate cells.
<b>MINERAL RICH</b>	contains alkaline minerals such as calcium, magnesium, and potassium.
<b>OXYGEN RICH</b>	increases the amount of dissolved oxygen in the blood
<b>DETOXIFYING</b>	eliminates mucus build-up on colon walls. Thus, improving the body's ability to absorb important nutrients
<b>CLEANSING</b>	contributes to flushing out acidic waste and toxins in the body over time
<b>ENERGIZING</b>	charged hydroxyl ions contribute to increased energy, mental clarity, and alertness
<b>WEIGHT CONTROL</b>	reduces the body's need for fatty tissues. Protect vital organs from acidity by storing acidic waste in less critical parts of the body
<b>CLEAN WATER</b>	pre-filtration cartridge inside the Cleansui removes chlorine and other common pollutants that are present in tap water
<b>REMOVES PESTICIDES</b>	Alkaline water with a pH over 10.5 removes pesticides from fruits and from vegetables as well.